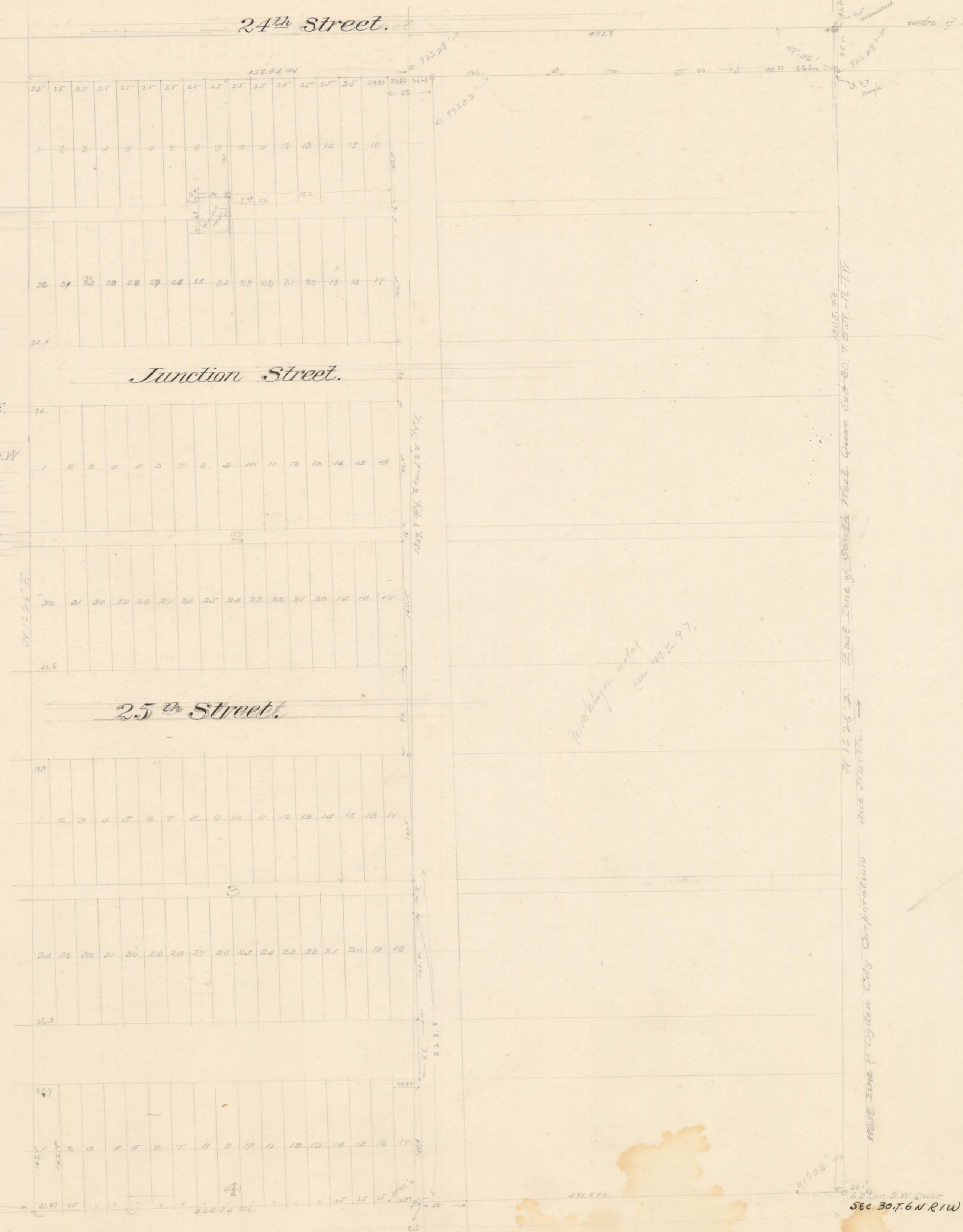


WEST
OGDEN
HEIGHTS
ADDITION
TO
Ogden City
UTAH.

December 1892.
Scale 80 ft. = 1 inch. H. Jenkins, C.E.

West Ogden Heights embraces the following tract of land, to wit: Part of the S.W. Quarter of Sec. 20, T. 6. N. R. 1. W. Salt Lake Meridian, 1st Survey. Beg. at a point 1729.85 ft. from the corner of said Quarter Sec. Running thence N. 42° 32' 44" E. thence N. 32° 32' 44" E. thence N. 21° 35' 35" E. parallel to the East line of said Quarter Sec. Thence West 42° 32' 44" along the N. line of 24th Str. thence S 12° 36' 16" W. 1363.8 ft. to beg.



Sec 20, T. 6. N. R. 1. W.

Handwritten note: "Buckley added in 1897"